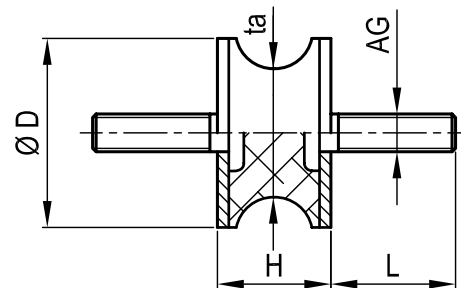


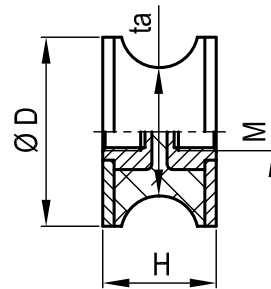
Gummi - Metall - Puffer Typ F



| D | H | ta | AG |
|-----|----|-----|----------------|
| 10 | 8 | 4,5 | M3x6 |
| 10 | 10 | 8 | M4x8/10/13 |
| 15 | 15 | 12 | M4x8/10/13 |
| 20 | 15 | 14 | M4x8/10/13 |
| 20 | 30 | 14 | M4x8/10/13 |
| 20 | 30 | 12 | M6x10/12/15/18 |
| 25 | 20 | 18 | M8x15/18/20/23 |
| 30 | 20 | 22 | M8x15/18/20/23 |
| 30 | 20 | 25 | M8x15/18/20/23 |
| 30 | 25 | 18 | M8x15/18/20/23 |
| 35 | 15 | 31 | M6x15/18 |
| 40 | 30 | 25 | M8x15/18/20/23 |
| 40 | 30 | 33 | M8x15/18/20/23 |
| 50 | 30 | 42 | M10x18/20/28 |
| 57 | 45 | 25 | M10x18/20/28 |
| 57 | 45 | 44 | M10x18/20/28 |
| 60 | 60 | 49 | M10x18/20/28 |
| 70 | 53 | 45 | M12x28 |
| 95 | 75 | 80 | M16x41 |
| 180 | 75 | 148 | M20x34 |

Weitere Puffer- und Gewindegrößen
auf Anfrage

Gummi - Metall - Puffer Typ G



| D | H | ta | IG |
|-----|----|-----|-----|
| 10 | 8 | 4,5 | M3 |
| 10 | 10 | 8 | M4 |
| 15 | 15 | 12 | M4 |
| 20 | 15 | 14 | M4 |
| 20 | 30 | 14 | M4 |
| 20 | 30 | 12 | M6 |
| 25 | 20 | 18 | M8 |
| 30 | 20 | 22 | M8 |
| 30 | 20 | 25 | M8 |
| 30 | 25 | 18 | M8 |
| 35 | 15 | 31 | M6 |
| 40 | 30 | 25 | M8 |
| 40 | 30 | 33 | M8 |
| 50 | 30 | 42 | M10 |
| 57 | 45 | 25 | M10 |
| 57 | 45 | 44 | M10 |
| 60 | 60 | 49 | M10 |
| 70 | 53 | 45 | M12 |
| 95 | 75 | 80 | M16 |
| 180 | 75 | 148 | M20 |

Weitere Puffer- und Gewindegrößen
auf Anfrage