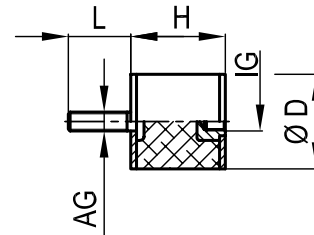


Gummi - Metall - Puffer Typ B



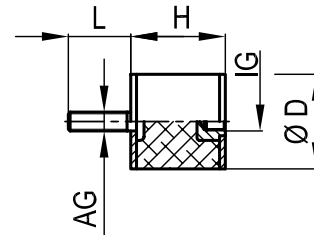
D	H	AG x L	IG
4	6	M2x6	M2
6	7	M2.5x6	M2.5
	7	M3x4/6/10	M3
8	8	M3x4/6/10	M3
10	6		
	8	M3x4/6/10	M3
	10	M4x6/8/10	M4
	15	M5x10/12/15	M5
	18		
11	11	M4x6/8/10	M4
12	10	M4x6/8/10	M4
13	8	M4x6/8/10	M4
	26		
15	4		
	6		
	8	M3x4/6/10	M3
	10	M4x6/8/10	M4
	15	M5x10/12/15	M5
	20	M6x6/8/10/12/15/18/23	M6
	25		
	30		
18	7,5	M6x6/8/10/12/15/18	M6
	8,5		
20	5		
	8		
	10	M4x6/8/10	M4
	12	M5x10/12/15	M5
	15	M6x6/8/10/12/15/18/23	M6
	20	M8x8/12/18/20/23/28/33	M8
	25		
	30		

D	H	AG x L	IG
25	8		
	10		
	12		
	15	M6x6/8/10/12/15/18/23	M6
	17	M8x8/12/18/20/23/28/33	M8
	20		
	25		
	30		
	40		
30	10		
	15		
	17	M6x6/8/10/12/15/18/23	M6
	20	M8x8/12/18/20/23/28/33	M8
	25	M10x10/18/23/28/33	M10
	30		
	35		
	40		
40	10		
	15		
	20		
	25	M6x6/8/10/12/15/18/23	
	28	M8x8/12/18/20/23/28/33	
	30	M10x10/18/23/28/33	
	35		
	40		
	45		
	50		
	60		
50	7	M8x8/12/18/20/23/28/33	M8
	12	M10x10/18/23/28/33	M10
	15		

Technische Änderungen vorbehalten

Maßstab 1:4

Gummi - Metall - Puffer Typ B



D	H	AG x L	IG
50	17		
	20		
	25		
	27	M8x8/12/18/20/23/28/33	M8
	30	M10x10/18/23/28/33	M10
	35	M12x12/18/23/27/37	M12
	38		
	40		
	45		
	50		
60			
60	20		
	25		
	30	M8x8/12/18/20/23/28/33	M8
	35	M10x10/18/23/28/33	M10
	40	M12x12/18/23/27/37	M12
	45		
	50		
	60		
70	20		
	25		
	30		
	35		
	40	M10x10/18/23/28/33	M10
	45	M12x12/18/23/27/37	M12
	50		
	55		
	60		
	70		
75	20		
	25		

D	H	AG x L	IG	
75	30			
	35			
	40	M10x10/18/23/28/33	M10	
	45	M12x12/18/23/27/37	M12	
	50			
	55			
	60			
	70			
	80	17		
		30	M12x12/18/23/27/37	M12
70				
80				
100	25			
	30			
	35			
	40			
	45			
	50	M12x12/18/23/27/37	M12	
	55	M16x26/36/41	M16	
	60			
	70			
	75			
125	90	M16x26/36/41	M16	
	125			
	150			
150	50			
	60	M16x26/36/41	M16	
	75	M20x41/45	M20	
200	100			
	100	M20x41/45	M20	

Weitere Puffer- und Gewindegrößen auf Anfrage.